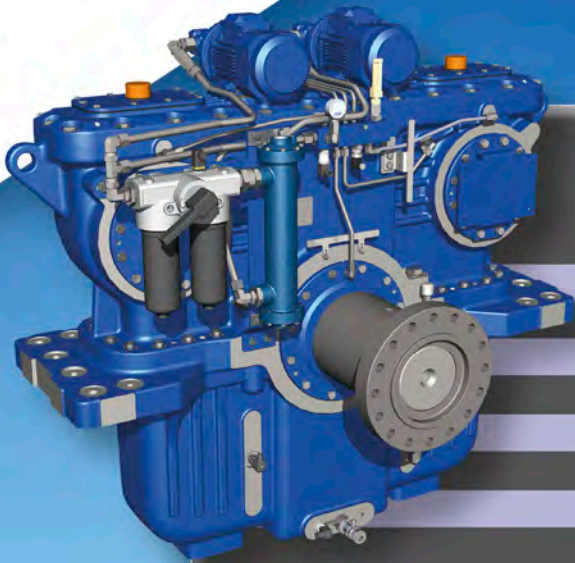


# Katsa™ 2L550 Series

## Electric Main Propulsion Gearbox

Katsa's 2L550 Electric Main Propulsion Gearbox has State-of-the-Art design focused for highest efficiency and silent running.

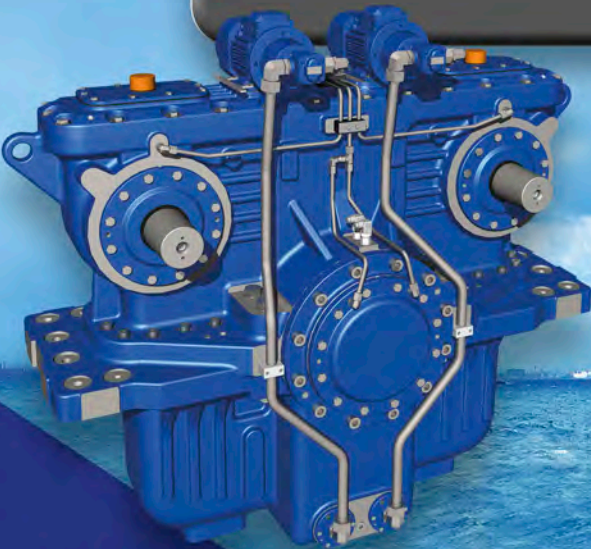
The Gearbox has two inputs for Electric Motors combined to one Thrust output for Propeller shaft. Integrated lubrication system ensures reliability and long service life for sustainable Maritime operation.



### 2L550 Electric Main Propulsion Marine Gearbox Technical Data

|                 |          |            |            |
|-----------------|----------|------------|------------|
| Ratio i         | Min/Max  | 3,62       | 7,04       |
| Input Power Max | [kW]     | 3000       | 1785       |
| Power Factor    | [kW/RPM] | 1,50       | 0,893      |
| Input RPM Max   | [RPM]    | 2000       | 2000       |
| Output Torque   | [Nm]     | 51500      | 60000      |
| Thrust Max      | [kN]     | -180...180 | -200...200 |
| Weight          | [kg]     | 4000       | 4000       |

Integrated lubrication system with double-filter and oilcooler. BV Marine Classification. Other Marine Classes on request.



Katsa Oy  
Tampere, Finland  
katsagears@katsa.fi  
[www.katsa.fi/en](http://www.katsa.fi/en)



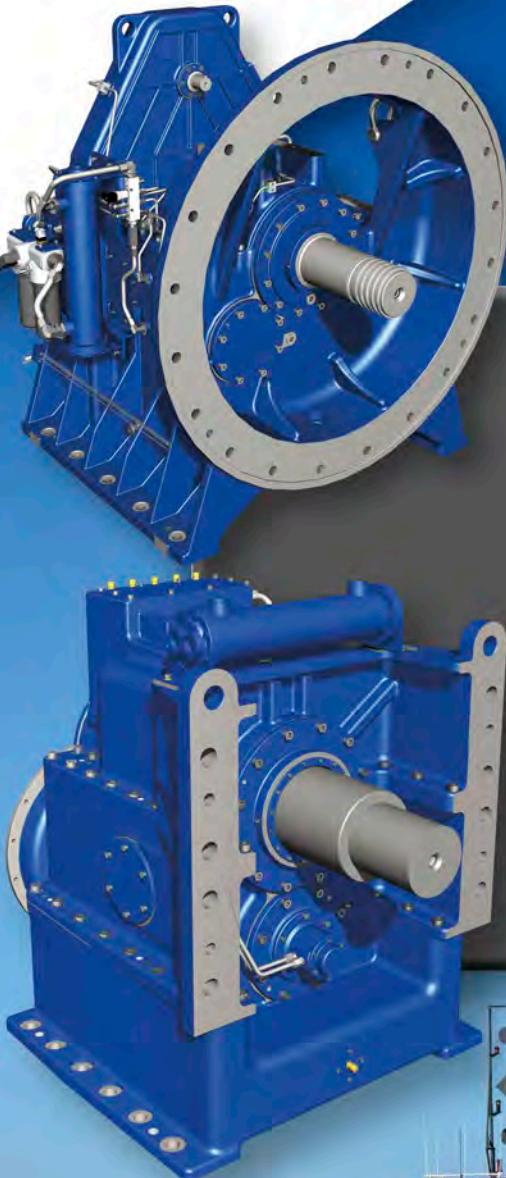
# Katsa™ Clutch Dredge Pump Gearbox Solutions

Katsa's Clutch actuated Dredge Pump Gearboxes are designed for direct Dredging Pump mounting with combination of gear reduction to safety input clutch and PTO's for hydraulic pumps and other accessory drives.

Dredging Pump is actuated with integrated Hydraulically Operated Wet running clutch. Integrated lubrication system ensures long service life and easy maintenance.

## Clutch Dredge Pump Gearbox Solutions Technical Data

- Pump Direct Mount
- Input
  - Power Range up to 1500kW
- Outputs and Typical Gear Ratios
  - $i=2.5 \dots 3.5$  for Dredge Pump
  - $i=1.5 \dots 2.5$  for PTO and Accessory Drives
- Hydraulically Operated Wet Running Clutch for Dredge Pump
  - Torque up to 40 000 Nm
  - Force at output shaft up to 300kN
- Integrated lubrication system with double-filter and oil-cooler.
  - Designs also for Submerged Conditions.



Katsa Oy  
Tampere, Finland  
katsagears@katsa.fi  
[www.katsa.fi/en](http://www.katsa.fi/en)